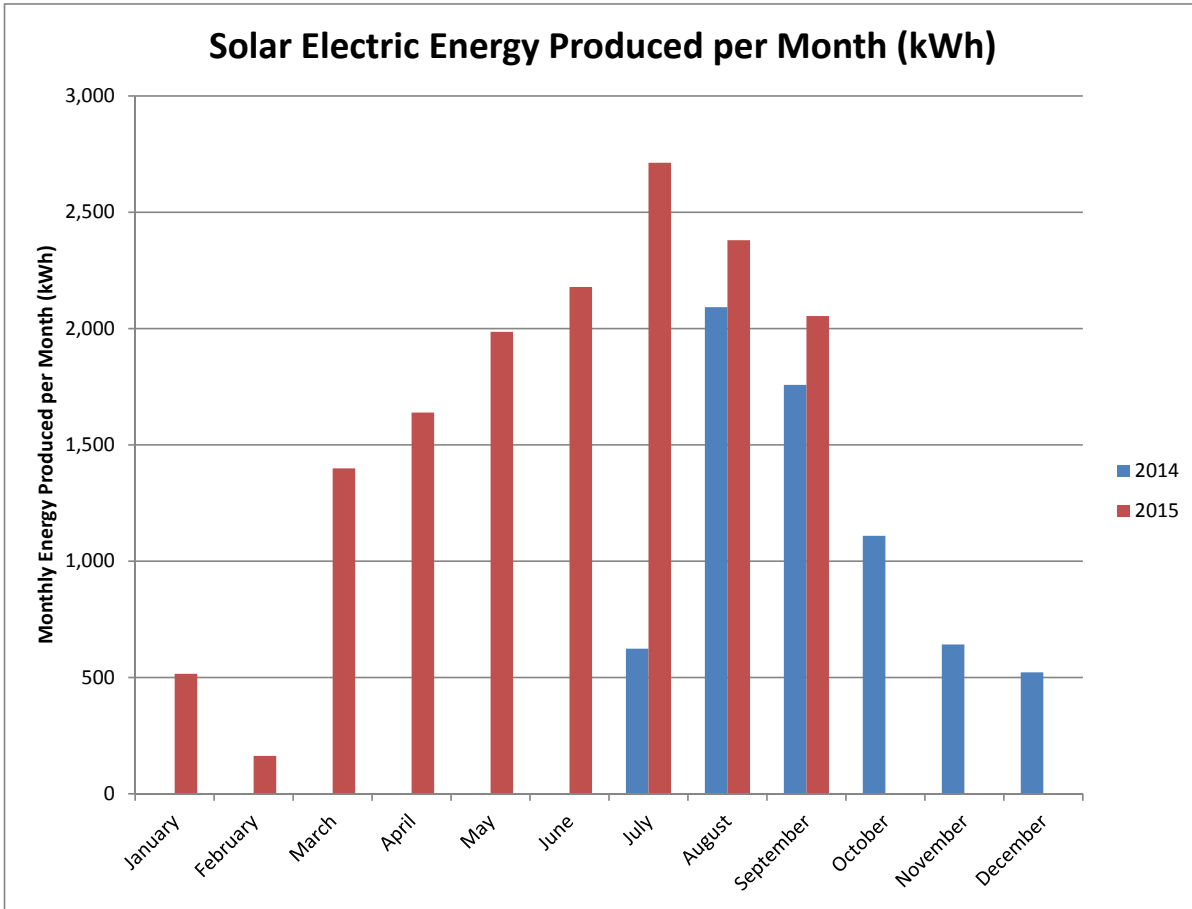


Solar Electric Energy Produced per Month (kWh)



Enlighten Report Data

Month	2014		2015	
	Output	Daily Average	Output	Daily Average
January			516	16.7 kWh
February			163	5.8
March			1,399	45.1
April			1,639	54.6
May			1,986	64.1
June			2,179	72.6
July	624		2,713	87.5
August	2,092	67.5	2,380	76.9
September	1,758	58.6	2,054	68.5
October	1,109	35.8		
November	642	21.4		
December	522	16.8		

Phase 2 installed June 2015

6,747 kWh	+	15,029 kWh =	21,776 Total Generation
Less Pre DTE SC			
-988			
5,759 kWh	+	15,029 kWh =	20,788 DTE Solar Currents Total Generation

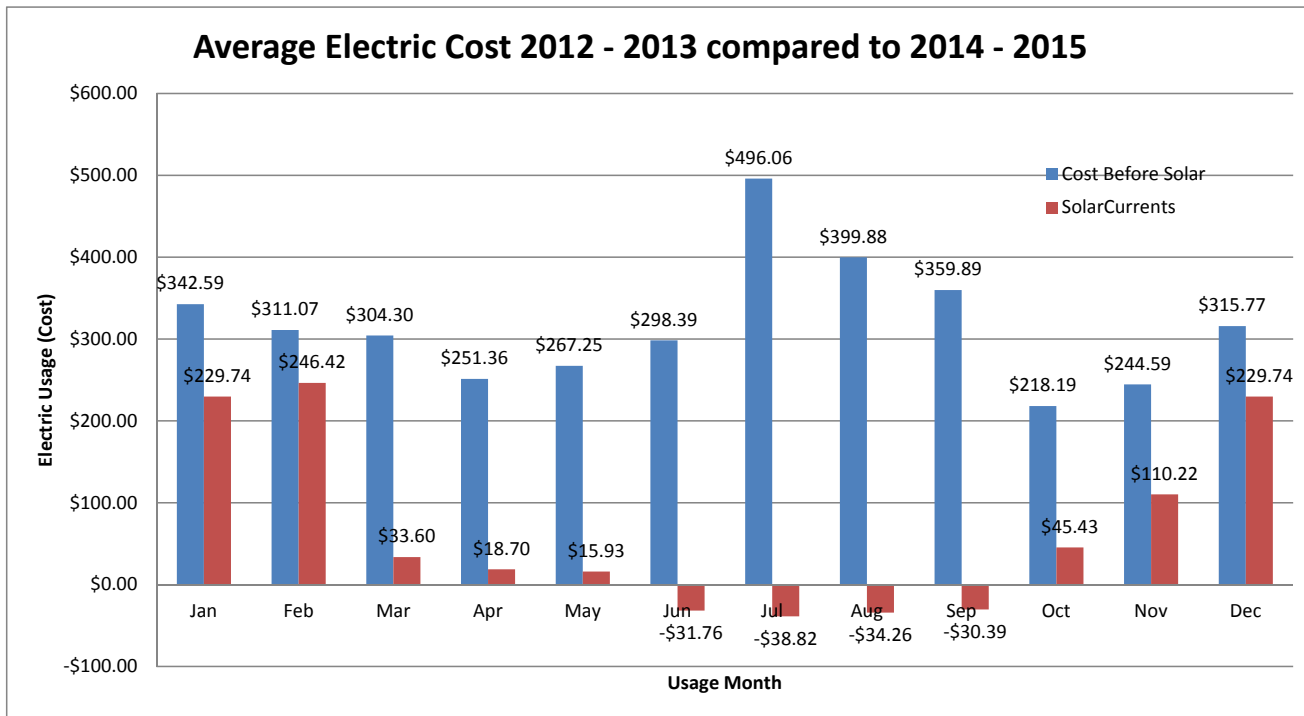
Approximate Cumulative Savings

Power Cost	20,788 kWh @ \$.14 / kWh =	\$2,910
Generation	20,788 kWh @ \$.02 / kWh =	<u>416</u>
Total Savings	20,788 kWh @ \$.16 / kWh =	\$3,326

Savings compared to ave. annual DTE costs 2012 - 2013= \$2,988

FPC Saline 143 E. Michigan Avenue

Bill Due	Use Thru	2012			2013			Average 2012 - 2013			DTE SolarCurrents		
		Kwh	Rate		Kwh	Rate		Kwh	Rate		Kwh	Rate	
Jan	Dec	1,840	\$246.21	0.13381	2,240	\$314.21	0.14027	2,040	\$280.21	0.13736			
Feb	Jan	1,920	\$277.72	0.14465	2,960	\$407.46	0.13766	2,440	\$342.59	0.14041	1,720	\$229.74	0.13357
Mar	Feb	1,920	\$277.87	0.14472	2,480	\$344.27	0.13882	2,200	\$311.07	0.14140	2,100	\$246.42	0.11734
Apr	Mar	1,920	\$277.82	0.14470	2,320	\$330.78	0.14258	2,120	\$304.30	0.14354	300	\$33.60	0.11201
May	Apr	1,520	\$213.82	0.14067	2,000	\$288.90	0.14445	1,760	\$251.36	0.14282	346	\$18.70	0.05411
Jun	May	1,680	\$249.44	0.14848	1,920	\$285.05	0.14846	1,800	\$267.25	0.14847	294	\$15.93	0.05411
Jul	Jun	2,240	\$308.86	0.13788	1,920	\$287.91	0.14995	2,080	\$298.39	0.14345	-72	-\$31.76	
Aug	Jul	3,920	\$531.94	0.13570	3,360	\$460.18	0.13696	3,640	\$496.06	0.13628	-88	-\$38.82	
Sep	Aug	2,880	\$399.43	0.13869	2,880	\$400.33	0.13900	2,880	\$399.88	0.13885	38	-\$34.26	
Oct	Sep	2,000	\$288.45	0.14423	3,120	\$431.32	0.13824	2,560	\$359.89	0.14058	42	-\$30.39	
Nov	Oct	1,520	\$212.27	0.13965	1,600	\$224.10	0.14006	1,560	\$218.19	0.13986	480	\$45.43	0.09465
Dec	Nov	1,600	\$220.83	0.13802	1,840	\$268.35	0.14584	1,720	\$244.59	0.14220	960	\$110.22	0.11481
Jan	Dec	<u>2,240</u>	<u>\$314.21</u>	0.14027	<u>2,240</u>	<u>\$317.32</u>	0.14166	<u>2,240</u>	<u>\$315.77</u>	0.14097	<u>1,720</u>	<u>\$229.74</u>	0.13357
	Total	27,200	\$3,818.87	0.14040	30,880	\$4,360.18	0.14120	29,040	\$4,089.53	0.14082	7,840	\$794.54	0.10134



Partial Solar during July with
Net Meter thru August 5, 2014

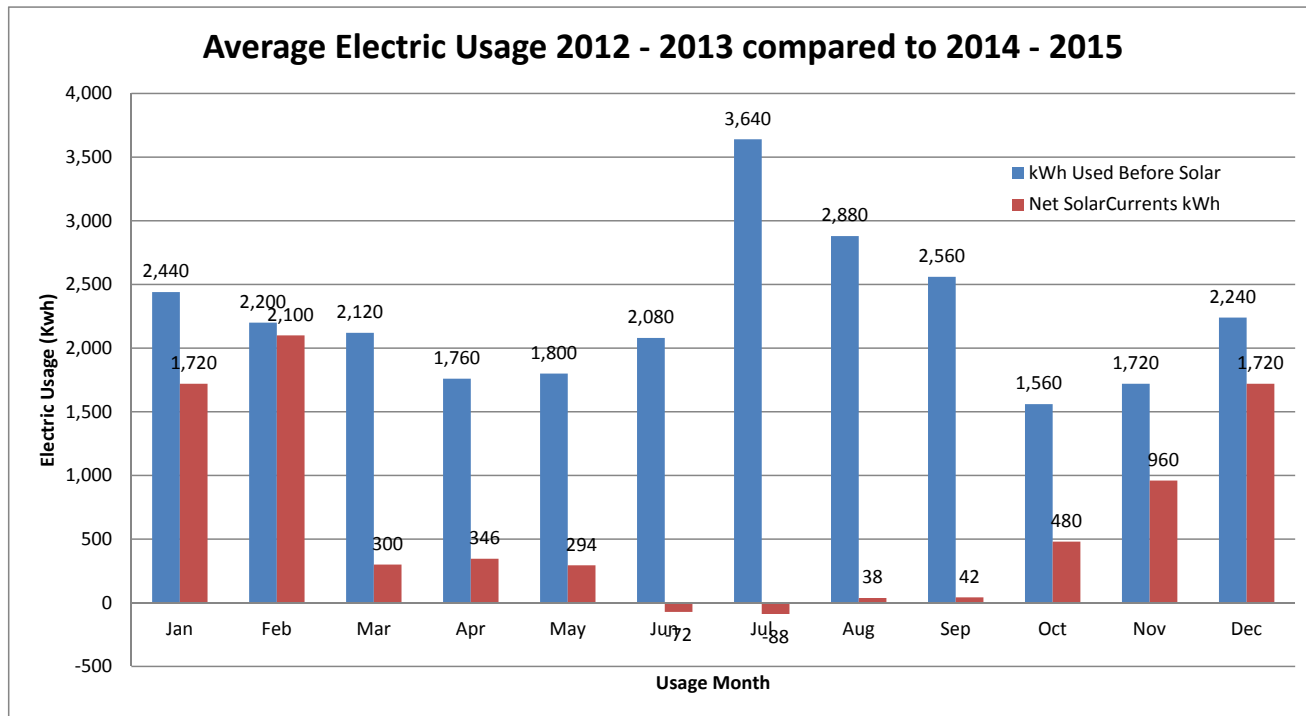
DTE SolarCurrents connected
August 8, 2014

Phase 2 connected 6/8/15

Annual Savings	
August 2014 - July 2015	
Savings in Electricity Usage	
9,920	= 65.8%
29,040	
Savings in Cost	
\$1,101.90	= 73.1%
\$4,089.53	
	\$2,987.63

FPC Saline 143 E. Michigan Avenue

Bill Due	Use Thru	2012			2013			Average 2012 - 2013			DTE SolarCurrents		
		Kwh	Rate		Kwh	Rate		Kwh	Rate		Kwh	Rate	
Jan	Dec	1,840	\$246.21	0.13381	2,240	\$314.21	0.14027	2,040	\$280.21	0.13736			
Feb	Jan	1,920	\$277.72	0.14465	2,960	\$407.46	0.13766	2,440	\$342.59	0.14041	1,720	\$229.74	0.13357
Mar	Feb	1,920	\$277.87	0.14472	2,480	\$344.27	0.13882	2,200	\$311.07	0.14140	2,100	\$246.42	0.11734
Apr	Mar	1,920	\$277.82	0.14470	2,320	\$330.78	0.14258	2,120	\$304.30	0.14354	300	\$33.60	0.11201
May	Apr	1,520	\$213.82	0.14067	2,000	\$288.90	0.14445	1,760	\$251.36	0.14282	346	\$18.70	0.05411
Jun	May	1,680	\$249.44	0.14848	1,920	\$285.05	0.14846	1,800	\$267.25	0.14847	294	\$15.93	0.05411
Jul	Jun	2,240	\$308.86	0.13788	1,920	\$287.91	0.14995	2,080	\$298.39	0.14345	-72	-\$31.76	
Aug	Jul	3,920	\$531.94	0.13570	3,360	\$460.18	0.13696	3,640	\$496.06	0.13628	-88	-\$38.82	
Sep	Aug	2,880	\$399.43	0.13869	2,880	\$400.33	0.13900	2,880	\$399.88	0.13885	38	-\$34.26	
Oct	Sep	2,000	\$288.45	0.14423	3,120	\$431.32	0.13824	2,560	\$359.89	0.14058	42	-\$30.39	
Nov	Oct	1,520	\$212.27	0.13965	1,600	\$224.10	0.14006	1,560	\$218.19	0.13986	480	\$45.43	0.09465
Dec	Nov	1,600	\$220.83	0.13802	1,840	\$268.35	0.14584	1,720	\$244.59	0.14220	960	\$110.22	0.11481
Jan	Dec	<u>2,240</u>	<u>\$314.21</u>	0.14027	<u>2,240</u>	<u>\$317.32</u>	0.14166	<u>2,240</u>	<u>\$315.77</u>	0.14097	<u>1,720</u>	<u>\$229.74</u>	0.13357
	Total	27,200	\$3,818.87	0.14040	30,880	\$4,360.18	0.14120	29,040	\$4,089.53	0.14082	7,840	\$794.54	0.10134



Partial Solar during July with Net Meter thru August 5, 2014

DTE SolarCurrents connected August 8, 2014

Phase 2 connected 6/8/15

Annual Savings
August 2014 - July 2015

Savings in Electricity Usage

<u>9,920</u>	=	65.8%
29,040		

Savings in Cost

<u>\$1,101.90</u>	=	73.1%
\$4,089.53		
		\$2,987.63